

**Date:** 10/1/2021

**Effective Date:** 10/1/2021

**Title:** COVID19 PCR Source and Collection Requirements Change

**Test:** COVID19 PCR

**Explanation of change:**

The collection vial and swabs to collect the specimen for Covid PCR testing have changed from 15mL tubes to **5mL tubes**. Swabs will now be **Biologix Oropharyngeal Swab**. **Effective 10/4/2021 15mL tubes will be rejected for testing.** If you need collection supplies please contact the laboratory at 607-274-4474

**Please note that these swabs are for AN (Anterior Nares) collection only. We no longer accept nasopharyngeal specimens. Saliva collection is limited to sites by prior arrangement only. Specimens collected using alternative collection materials to those listed below will be rejected.**

**SUPPLIES**

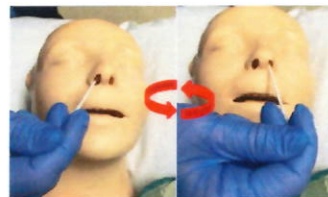
- Purple 5mL Vial
- Ensure 1mL of media is inside 5mL vial and did not leak in transport
- Biologix Oropharyngeal Swab for Anterior Nares Collection



← 1mL media requirement

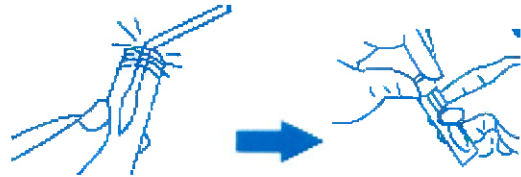
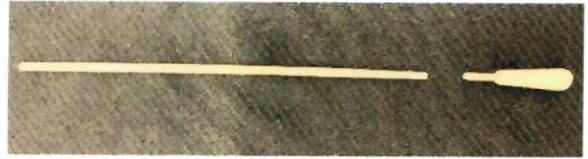
**OBTAIN SAMPLE FROM BOTH NARES**

- Insert nasal swab into first nostril at least ½ inch but less than 1”.
- Gently rotate the swab for 10-15 seconds against the nasal wall and septum to collect cells
- Repeat above steps for the second nostril



### PREPARE THE VIAL

- Insert swab into 5mL vial
- Bend and break so that the swab shaft fits completely in the vial so that there is no obstruction to the sample of pressure on the media container cap when closed.
- Cap should easily be reapplied with no pressure on the swab shaft. Oropharyngeal swab provides lower breaking notch to fit inside vial.
- Ensure cap on vial is **aligned** and **tightened** so the sample liquid does not leak out. **DO NOT OVERTIGHTEN THE CAP.**
- Confirm media will not leak from Vial.



### TRANSPORT TO THE LAB

- Label the vial using proper patient identification protocol.
- Patient (Non-employee testing) chart labels need to be aligned under the rim of the Vial.
- Pinch at the bottom. Please note – you no longer need to send yellow “pool” sample sticker.
- Insert in lab specimen bag.



Dr. Elizabeth Plocharczyk, Laboratory Medical Director

Date

10/01/21

Michelle Walters, Laboratory Administrative Director

Date

10/1/2021